

**STATE OF HAWAII  
DEPARTMENT OF TRANSPORTATION  
AIRPORTS**

**ADDENDUM NO. 2  
FOR  
CONCRETE SPALL REPAIRS AT TERMINAL 2 ROADWAYS  
DANIEL K. INOUE INTERNATIONAL AIRPORT  
HONOLULU, OAHU, HAWAII  
STATE PROJECT NO. AO1043-33  
AIP PROJECT NO. 3-15-0005-XXX  
MARCH 22, 2024**

This Addendum shall make the following amendments to the Solicitation.

**A. PART II – TECHNICAL PROVISIONS**

**1. SECTION 01010 – DESCRIPTION OF WORK**

- a. Delete **Pages 01010-5 through 01010-9**, dated r3/6/24 and replace with **Pages 01010-5 through 01010-9**, dated r3/22/24.

**B. PLANS - APPROVED SUBSTITUTION REQUESTS**

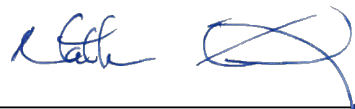
1. Delete **SHEET E-5000 – COLUMN LIGHT MOUNTING DETAIL**, dated 01/19/2024 and replace with **SHEET E-5000 – COLUMN LIGHT MOUNTING DETAIL**, dated r03/18/24.
2. Delete **SHEET E-5001 – LIGHT FIXTURE SCHEDULE AND STEP LIGHT DETAIL**, dated 01/19/24 and replace with **SHEET E-5001 – LIGHT FIXTURE SCHEDULE AND STEP LIGHT DETAIL**, dated r03/18/24.

The following is provided for information:

**C. RESPONSES TO REQUEST FOR INFORMATION (RFI'S / QUESTIONS)**

1. The attached Responses to Request for Information is provided for information.

Please acknowledge receipt of this Addendum No. 2 by recording the date of its receipt in the space provided on Page P-4 of the Proposal.



---

**NATHAN KANESHIGE**  
Engineering Program Manager

- b. Loud noise-generating work may not be performed while the gates are being used for active flight activities. Active flight schedule times shall be checked every night on the Flight Information Display System and are subject to change daily. Any work that will impact the usage of gates shall be coordinated with Ramp Control.
  3. Work activities at the Diamond Head Concourse 1<sup>st</sup>, 2<sup>nd</sup>, and 3<sup>rd</sup> level roadways shall occur between 9:00 p.m. and 5:00 a.m. During non-working hours, safe and unobstructed access to and from the Diamond Head Concourse must be provided for Wiki Wiki Shuttle operations.
    - a. One (1) lane access must be maintained for Wiki Wiki Shuttle access at all times.
    - b. Loud noise-generating work may not be performed while the gates are being used for active flight activities. Active flight schedule times shall be checked every night on the Flight Information Display System and are subject to change daily. Any work that will impact the usage of gates shall be coordinated with Ramp Control.
  4. Work activities at the Ewa Connecting Link roadways shall occur between 10:30 p.m. and 5:00 a.m. During non-working hours, safe and unobstructed access along the Ewa Connecting Link must be provided for Wiki Wiki Shuttle operation.
    - a. Only one (1) connecting link ramp from ground to second level, either Ewa or Diamond Head, may be closed at any given time to perform repair work.
    - b. Full width roadway closure of the connecting link is acceptable during working hours.
    - c. All roadways at the connecting link must be reopened for Wiki Wiki
    - c. Ewa and Diamond Head connecting links may not be worked on simultaneously in case unforeseen access is needed to concourse upper floors.
  5. Work activities at the Diamond Head Connecting Link roadways shall occur between 10:30 p.m. and 5:00 a.m. If work performed is not loud, odorous, dusty, and does not cause any obstruction to Airport operations other than the listed allowable closures in the subparagraphs below, additional work hours may be granted, subject to the DOT-A approval. During non-working hours, safe and unobstructed access along the Diamond Head Connecting Link must be provided for Wiki Wiki Shuttle operations.
    - a. Only one (1) connecting link ramp from ground to second level, either Ewa or Diamond Head, may be closed at any given time to perform repair work.





- b. Full width roadway closure of the connecting link is acceptable during working hours.
- c. All roadways at the connecting link must be reopened for Wiki Wiki shuttle operations during non-work hours.
- d. Ewa and Diamond Head connecting links may not be worked on simultaneously in case unforeseen access is needed to concourse upper floors.

- 6. Work activities at Terminal 2 3<sup>rd</sup> level roadway shall occur between 9:00 p.m. and 5:00 a.m. During non-working hours, safe and unobstructed access along the Terminal 2 3<sup>rd</sup> level roadway must be provided for Wiki Wiki Shuttle operations.
- 7. In the event of an emergency, airport operations shall take precedence over all construction activities.



- 8. Contractor shall submit a proposed construction schedule and phasing plan to DOT-A for review and approval no later than 90 days after award of the contract. Contractor shall attend meetings with DOT-A, construction management consultant, and affected stakeholders prior to the preparation of the schedule and phasing plan, to review the operational restrictions being imposed on the project.
- 9. The Contractor shall coordinate their schedule with the DOT-A if rescheduling of work or intermittent work is required, such work shall be performed at no extra cost to the State. If the Contractor elects to work overtime, compensation for State employees and for construction management consultant as authorized by DOT-A shall be the Contractor's obligation to pay in accordance with Section 7.6 of the General Provisions.

- B. Contractor shall clean work areas at the end of each working shift. Rubbish, loose materials, etc. shall be disposed of daily. **Tools and equipment shall not be left unattended during working hours.** This includes tools left in unlocked vehicles, in the bed of pickup trucks, or in unlocked job sites. TSA citations may result in fines in excess of \$13,000 per violation and/or the confiscation of AOA Badges. Materials shall be safely secured and stored in an area designated by the Airport Manager.

#### 1.08 SAFETY

- A. The Contractor shall take the necessary precautions to protect his workers and other personnel from injuries. The rules and regulations promulgated by the Occupational Safety and Health Acts are applicable and made a part of these specifications.
- B. Barricades and warning signs shall be erected by the Contractor in the work area to properly protect all personnel in the area.

- C. During the progress of the work debris, empty crates, waste, material drippings, etc., shall be removed by the Contractor at the end of each workday and the work area shall be left clean and orderly.

#### 1.09 OPERATION OF AIRPORT FACILITIES DURING CONSTRUCTION

- A. The Contractor shall coordinate the phases of work under this contract with the Engineer to permit the continuing operation of existing Airport facilities and to minimize disruption to pedestrian and vehicular traffic.
- B. Utility Maintenance: During the construction of this contract, existing utility services serving occupied or used facilities shall not be disrupted except where authorized in writing by authorities having jurisdiction. Contractor shall provide temporary services during interruptions to existing utilities, as acceptable to the Engineer. Damages to the existing utility facilities by the Contractor will be repaired at the Contractor's expense.
- C. Outages for water, power, communications, air conditioning or any other utility, if necessary, shall be kept to a minimum and scheduled for off-peak hours, generally from 12:00 a.m. to 6:00 a.m. The Contractor shall submit written requests (Outage Requests) to the Engineer for such outages no later than twenty-one (21) calendar days in advance. The request shall include a description of work and the duration of the outage. Outage Requests shall also be required for disruptions or changes to traffic and airport operations, and for the start of construction activities in any new area. The Contractor shall not proceed with such outage work until written approval is received from the State.

#### 1.10 DISPOSAL OF EXCESS SOIL MATERIALS

- A. Off-Site Disposal of Excess Soil Material

Any excess soil material and rubbish disposed of outside the Airport property shall be the responsibility of the Contractor. The Contractor shall make all arrangements and bear all costs involved therewith, and disposal shall be in compliance with the local authorities such as the Department of Health, etc.

#### 1.11 CONSTRUCTION STAKES, LINES AND GRADES

- A. The Contractor shall perform all construction layout and reference staking necessary for the proper control and satisfactory completion of all structures, grading, paving, drainage, sewer, water, and all other appurtenances required for the completion of the work.
- B. Existing horizontal and vertical survey control points for the project are shown on the plans. The Contractor shall verify the location of all control points prior to the start of construction.
- C. The Department will not be responsible for delays in setting stakes and marks.

- D. All control points and stakes or marks which the Engineer may set shall be preserved by the Contractor. If such control points, stakes or marks are destroyed or disturbed by the Contractor, the cost of replacing such stakes or marks will be charged against the Contractor and deducted from payments due the Contractor.
- E. The Contractor shall be responsible for the placement and preservation of adequate ties to all control points whether established by the Contractor or by the Engineer.
- F. All original, additional or replacement stakes, marks, references and batter-boards which may be required for the construction operations, shall be furnished, set and properly referenced by the Contractor. The Contractor shall be solely and completely responsible for the accuracy of the line and grade of all features of the work. Any errors or apparent discrepancies found in previous surveys, the plans and specifications shall be called to the Engineer's attention by the Contractor for correction or interpretation prior to proceeding with the work.
- G. Before construction is started on any structure which is referenced to an existing structure or topographical feature, the Contractor shall check the pertinent locations and grades of the existing structures or topographical features to determine whether the locations and grades shown on the plans are correct.
- H. All construction staking shall be performed by qualified personnel under the direct supervision of a person with an engineering background who is experienced in the direction of such work and is acceptable to the Engineer.
- I. All stakes and markers used for control staking shall be of the same quality as used by the Department for this purpose. For slope limits, pavement edges, gutter lines, et cetera, where so called "working" stakes are commonly used, stakes of different quality may be acceptable.
- J. The Department may check the Contractor's control of the work at any time as the work progresses. The Contractor will be informed of the results of these checks, but the Department by doing so will in no way relieve the Contractor of its responsibility for the accuracy of the layout work. The Contractor shall, at his expense, correct or replace any deficient or inaccurate layout and construction work. If, as a result of these deficiencies or inaccuracies, the Department is required to make further studies, redesign, or both, all expenses incurred by the Department due to such deficiencies or inaccuracies, the costs will be deducted from any payments due the Contractor.
- K. The Contractor shall furnish all necessary personnel, engineering equipment and supplies, materials, and transportation incidental to the accurate and satisfactory completion of this work.

Unless otherwise provided, all requirements imposed by this section and performed by the Contractor shall be considered incidental to the various contract items and not separate or additional payment will be made thereof.

1.12 SPECIAL PROJECT REQUIREMENTS

- A. Upon receipt of the Contract, the Contractor shall process and return the Contract to the State' Contract Office within five (5) calendar days.
- B. The State intends to issue the Notice to Proceed for the Project to the Contractor immediately after contract execution. The Contractor shall be able to commence work on this date.

PART 2 – PRODUCTS (Not Used)

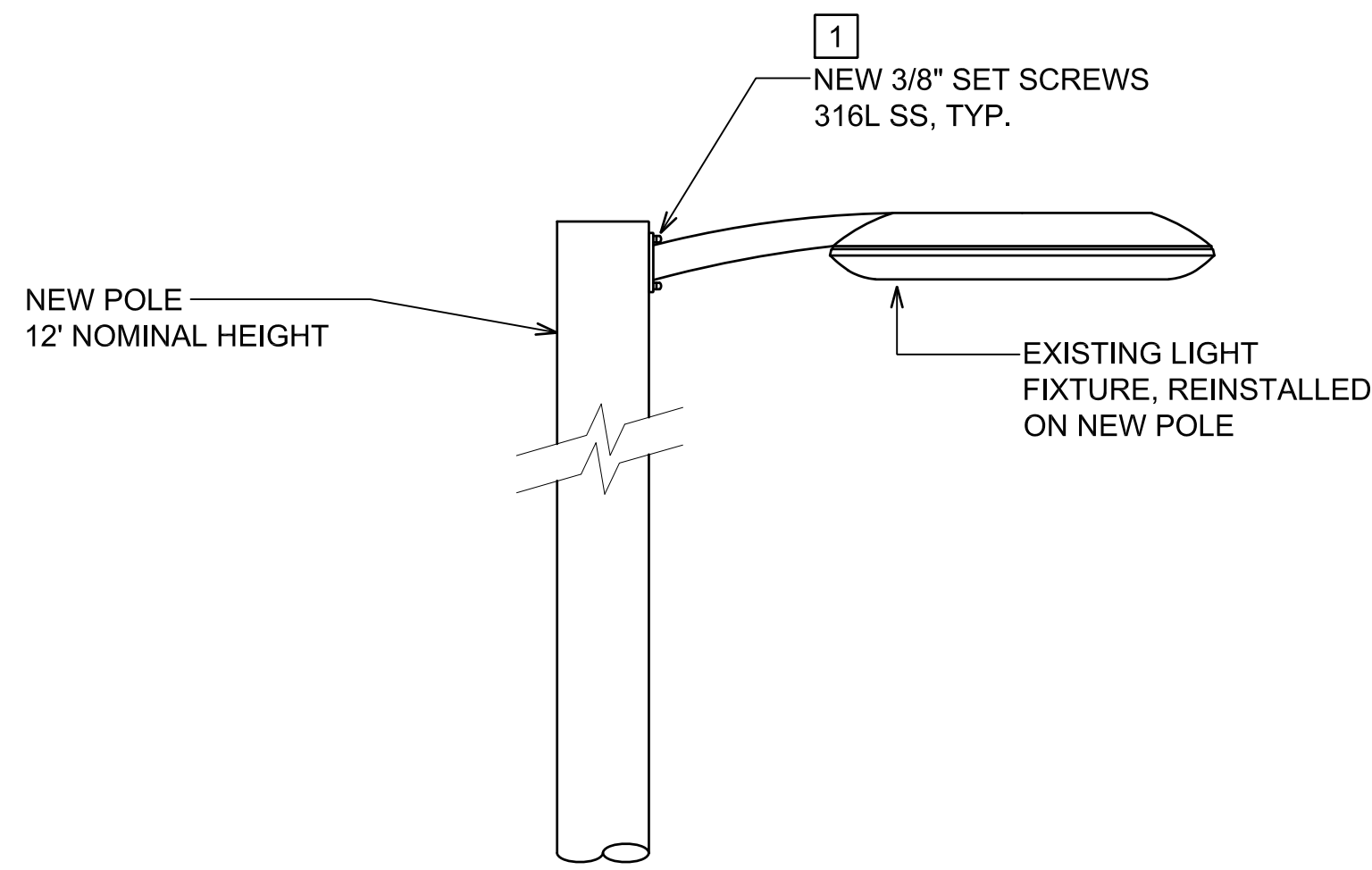
PART 3 – EXECUTION (Not Used)

PART 4 – MEASUREMENT AND PAYMENT

4.01 BASIS OF MEASUREMENT AND PAYMENT

Work under this section will not be measured nor paid for separately but shall be considered incidental to and included in the bid prices for the various items of work in this project.

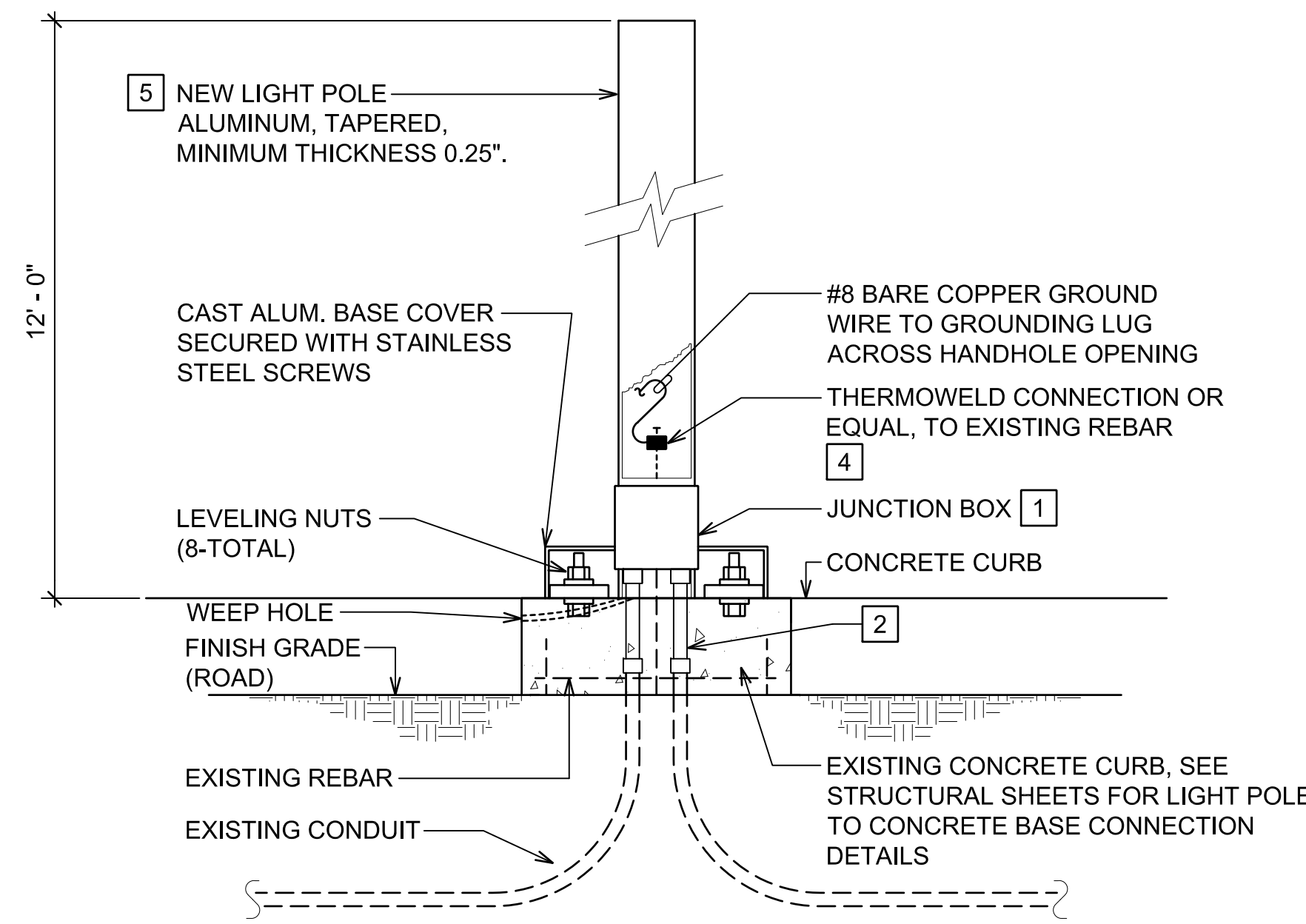
END OF SECTION



NOTE(S):

- 1 TIGHTEN SET SCREWS PER MANUFACTURER'S REQUIREMENTS.

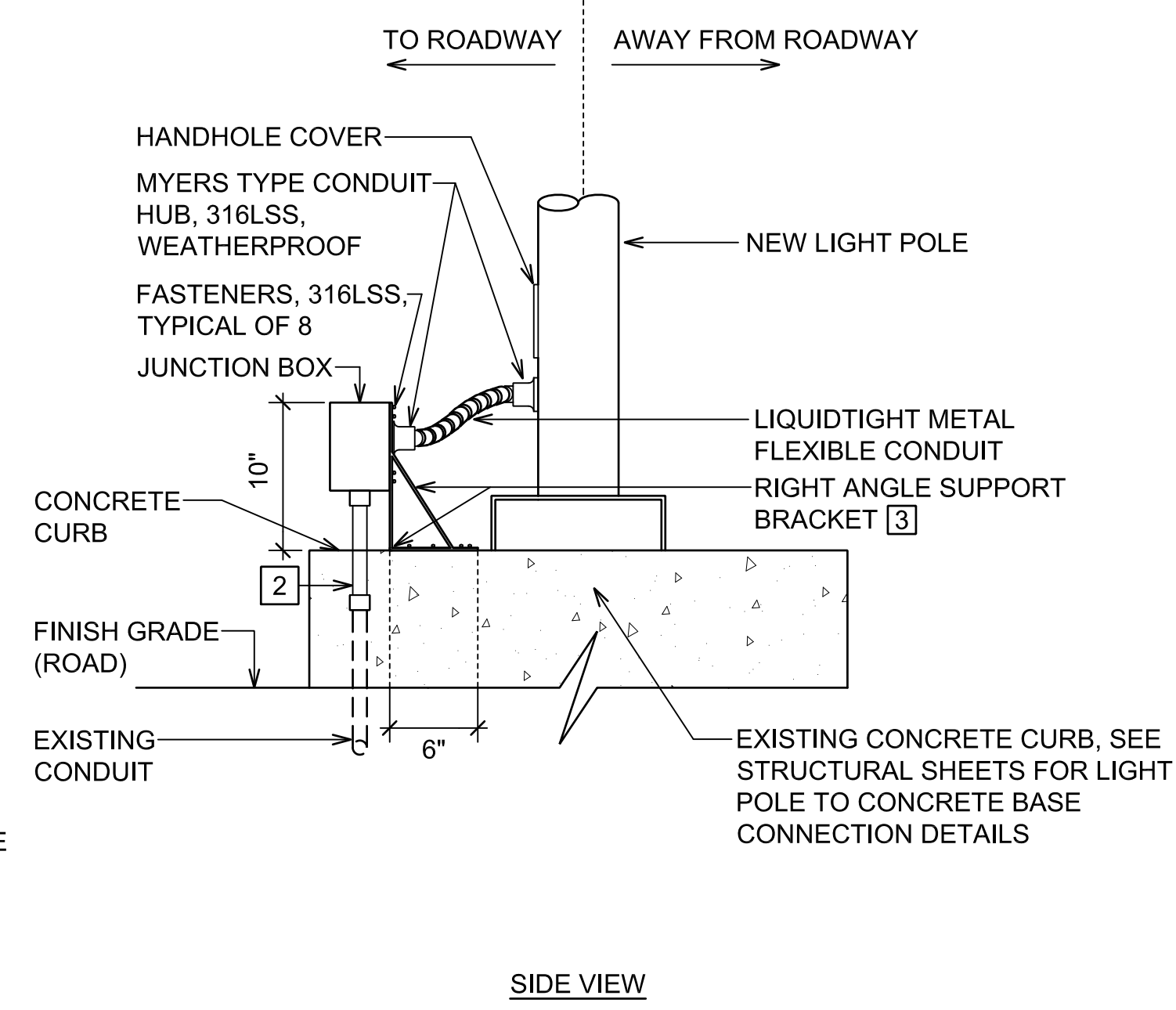
**1** LIGHT FIXTURE MOUNTING DETAIL  
E-5000 NOT TO SCALE



NOTE(S):

- 1 JUNCTION BOX, 6" SQ X 4" D, NEMA 4X, 316SS. ALL CONDUCTOR SPLICES TO BE IN JUNCTION BOX. ALL PENETRATIONS INTO JB TO BE WEATHERPROOF, ENSURE BOX MAINTAINS NEMA 4X RATING.
- 2 TRANSITION COUPLING FROM EXISTING CONDUIT TO NEW JUNCTION BOX, WEATHERPROOF CONNECTIONS. TO INSTALL TRANSITION COUPLING, CHIP AWAY EXISTING CONCRETE TO EXPOSE 4" OF EXISTING CONDUIT. TRANSITION COUPLING TO FINISH 4" ABOVE HEIGHT OF CONCRETE BASE. COORDINATE WORK WITH OTHER DISCIPLINES PRIOR TO DEMOLITION TO INTERCEPT AND PROTECT EXISTING CONDUIT AND CONDUCTORS. ALL CONDUCTOR SPLICES SHALL BE WEATHERPROOF.
- 3 RIGHT ANGLE SUPPORT BRACKET, 316SS. MADE OF RECTANGLE STEEL 1/4" THICK X 1"W. BRACKET 10"H X 6"L. SECURE TO CONCRETE BASE WITH 4-(3/8" X 4" CONCRETE ANCHORS). 2 SUPPORT BRACKETS PER JB.
- 4 COORDINATE WITH OTHER DISCIPLINES PRIOR TO DEMOLITION TO EXPOSE EXISTING REBAR WITHIN EXISTING CONCRETE CURB.
- 5 ALUMINUM POLE, 12'-0" NOMINAL HEIGHT, ALLOY 6063-T6, CONFORMING TO ASTM B 221, MODEL VALMONT S 420040404Y4D1312 OR APPROVED EQUAL. HAPCO #SSA-12F-4-AD-SPECIFY FINISH HAS BEEN APPROVED AS A SUBSTITUTE MATERIAL FOR THE NEW LIGHT POLE. SEE ALSO GENERAL NOTES #1 & #2 ON THIS PLAN SHEET.
- 6. FIELD VERIFY LOCATION OF CONDUIT PENETRATION AFTER COLUMN DEMOLITION. IF CONDUIT PENETRATION IS NOT CENTERED WITH THE PREEXISTING COLUMN, NOTIFY ENGINEER.

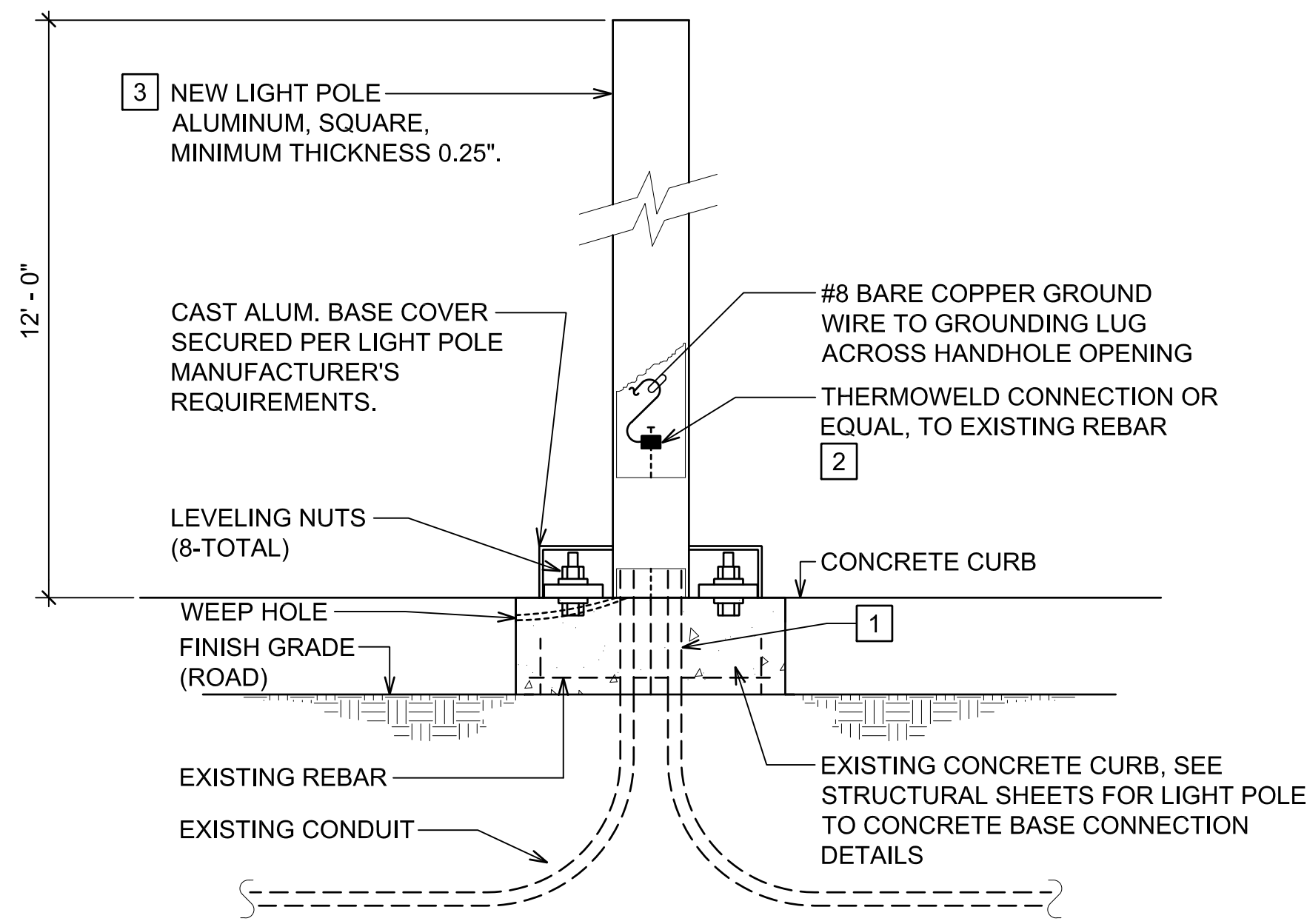
**2** LIGHT POLE DETAIL - EXISTING CONDUITS EXTENDED TO NEW POLE LOCATION  
E-5000 NOT TO SCALE



GENERAL NOTE(S):

- HAPCO POLE SHALL BE CONSTRUCTED OF 6063-T6 ALLOY. CONTRACTOR SHALL CONFIRM FINISH TYPE WITH THE HAWAII DEPT. OF TRANSPORTATION PRIOR TO ORDERING. PROVIDE LUMINAIRE/ARM DRILLING PATTERN TO MANUFACTURER PRIOR TO ORDERING.
- NOTE THAT THE APPROVAL OF THIS MATERIAL SUBSTITUTION SHALL NOT IN ANY CIRCUMSTANCE BE CONSTRUED AS AN APPROVAL FOR DEVIATION FROM THE CONTRACT DOCUMENTS UNLESS THE ENTITY SEEKING SUCH APPROVAL HAS, IN WRITING, SPECIFICALLY CALLED THE ENGINEER'S OR THE APPROVING AGENCY'S ATTENTION TO EACH DEVIATION AT THE TIME OF SUBMISSION. SAID ENTITY AND/OR AFFECTED MATERIALS, EQUIPMENT, AND LABOR TO ENSURE PROPER EXECUTION OF THE WORK AS PER THE INTENT OF THE CONTRACT DOCUMENTS.

**3** LIGHT POLE DETAIL - NEW POLE MOUNTED OVER EXISTING CONDUITS  
E-5000 NOT TO SCALE



NOTE(S):

- 1 EXISTING CONDUIT TO TERMINATE INSIDE NEW POLE. RETAIN MINIMUM 4" HEIGHT OF EXISTING CONDUIT ABOVE CONCRETE CURB GRADE. ALL SPLICES SHALL BE WEATHERPROOF. COORDINATE WITH OTHER DISCIPLINES PRIOR TO DEMOLITION TO INTERCEPT AND PROTECT EXISTING CONDUIT AND CONDUCTORS.
- 2 COORDINATE WITH OTHER DISCIPLINES PRIOR TO DEMOLITION TO EXPOSE EXISTING REBAR WITHIN EXISTING CONCRETE CURB.
- 3 ALUMINUM POLE, 12'-0" NOMINAL HEIGHT, ALLOY 6063-T6, CONFORMING TO ASTM B 221, MODEL VALMONT S 420040404Y4D1312 OR APPROVED EQUAL. HAPCO #SSA-12F-4-AD-SPECIFY FINISH HAS BEEN APPROVED AS A SUBSTITUTE MATERIAL FOR THE NEW LIGHT POLE. SEE ALSO GENERAL NOTES #1 & #2 ON THIS PLAN SHEET.
- 4. FIELD VERIFY LOCATION OF CONDUIT PENETRATION AFTER COLUMN DEMOLITION. IF CONDUIT PENETRATION IS NOT CENTERED WITH THE PREEXISTING COLUMN, NOTIFY ENGINEER.

DSGN.	DRWN.	CHKD.	APPD.
MP	CAD	JS	JS

KEY PLAN / NOTES:

NO.	DATE	REVISIONS
1	03/18/24	ADDENDUM NO. 2

CONSTRUCTION DOCUMENTS  
JANUARY 19, 2024  
DATE

PROJECT TITLE :  
CONCRETE SPALL REPAIRS AT TERMINAL 2 ROADWAYS

AT DANIEL K. INOUE INTERNATIONAL AIRPORT  
HONOLULU, OAHU, HAWAII

PROJECT NO. :  
AO1043-33

SHEET TITLE:

COLUMN LIGHT MOUNTING DETAIL

DATE :	DWG. NO.
01/19/2024	E-5000
SHEET :	
631 OF 634 SHEETS	

Z:\ACAD\PROJECTS\221023\_PHASE 2\E5000\_221023\_LITG\_MOUNTING DETAILS 3/18/2024 2:55PM MPetner

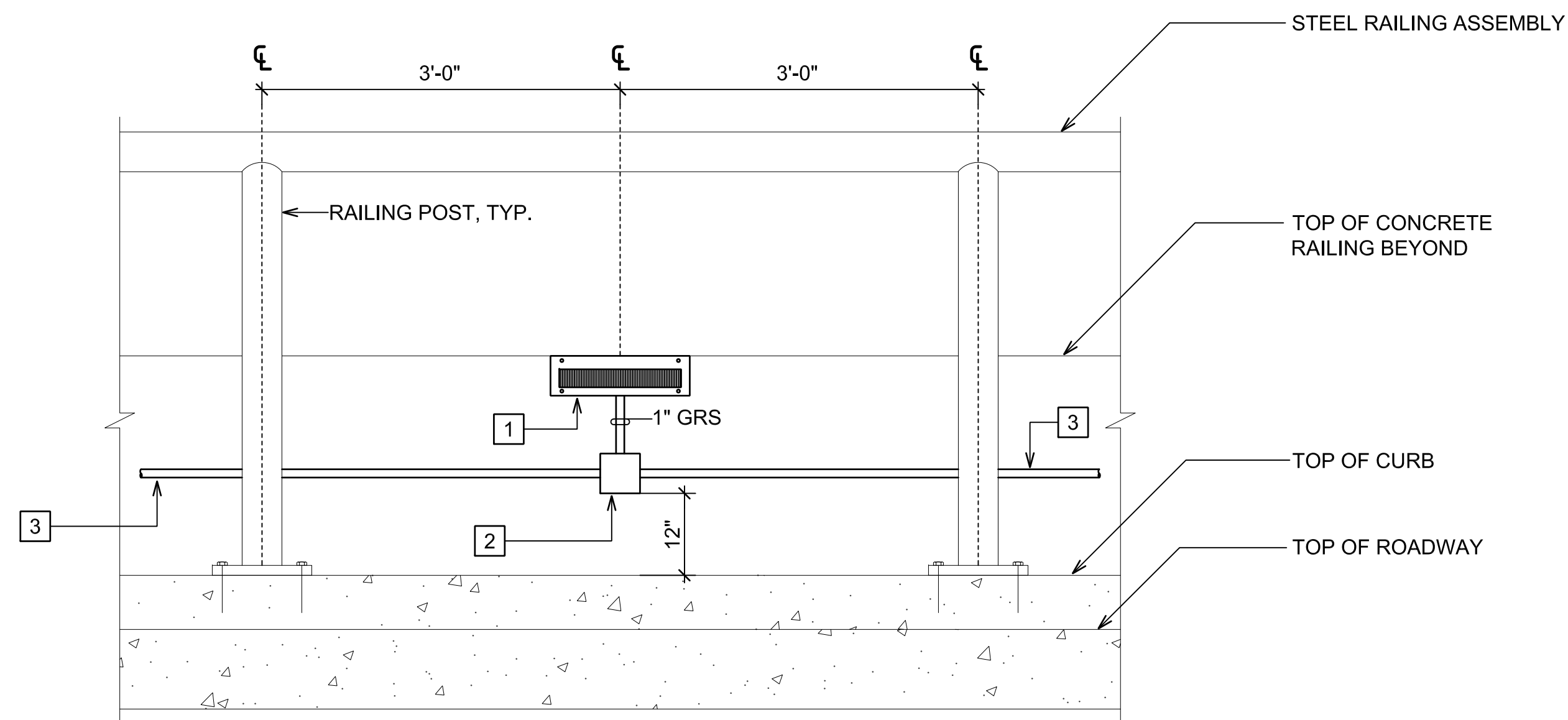


TYPE	MOUNTING	DESCRIPTION	LIGHT ENGINE	MANUFACTURER OR APPROVED EQUAL
<b>LIGHT FIXTURES</b>				
A	ARM MOUNT	ROUND AREA LIGHT, TYPE 4 SHORT DISTRIBUTION, ARM MOUNT, ONE-PIECE CAST ALUMINUM HOUSING WITH INTEGRAL ARM, BLACK FINISH, 100,000 HOUR LIFE AT L70 LUMEN MAINTENANCE, 4000K, 120-277V, UL WET LOCATION LISTED, INTEGRAL PHOTOCELL.	72W LED, 4000K, 8323 LUMENS, 80 CRI	GARDCO P20-C-A04-840-T4S-AR1-UNV-PCB-BK OR PRE-APPROVED EQUAL. SEE ALSO GENERAL NOTES #1 & #2 ON THIS PLAN SHEET FOR AN APPROVED MATERIAL SUBSTITUTION
B	SURFACE	STEP LIGHT, SURFACE MOUNTED, 16 GAUGE SATIN FINISHED STAINLESS STEEL HOUSING, FROSTED GLASS DIFFUSER, SURFACE CONDUIT ENTRY OPTION, 4000K, 120-277V, UL WET LOCATION LISTED, INTEGRAL PHOTOCELL.	20W LED, 4000K, 1535 LUMENS, 80 CRI	COLE LIGHTING SL612W-N-HO-4K-FG-PC OR PRE-APPROVED EQUAL
C	SURFACE	LOW PROFILE WALL PACK, SURFACE MOUNTED, DIE-CAST ALUMINUM BODY WITH DARK BRONZE FINISH, 100,000 HOUR LIFE AT L90 LUMEN MAINTENANCE, 4000K, 120-277V, IP66 RATED, INTEGRAL PHOTOCELL.	24W LED, 4000K, 2912 LUMENS, 70 CRI	LITHONIA LIGHTING WPX1-LED-P2-40K-MVOLT-PE-DDBXD OR PRE-APPROVED EQUAL
D	RECESS CAN	CAN LIGHT, RECESS MOUNTED, HYPERBOLIC MEDIUM CLEAR DIFFUSE REFLECTOR, WHITE FLANGE TRIM, 4000K, 120-277V, OVERSIZE RING FOR ROUGH-IN OPENINGS BETWEEN 8-1/8" TO 8-7/8".	30W LED, 4000K, 2300 LUMENS, 80 CRI	ACUITY BRANDS INDY LRT8-23LM-40K-MVOLT-80CRI-HM-CD-PF-INOR8/878 OR PRE-APPROVED EQUAL

**GENERAL NOTE(S):**

- KIM LIGHTING #UR20-56L75-4K8-4-UNV-ASQ-BLT-7PR-TL-CLR (80 CRI MINIMUM) HAS BEEN APPROVED AS A SUBSTITUTE MATERIAL FOR THE ARM MOUNT.
- NOTE THAT THE APPROVAL OF THIS MATERIAL SUBSTITUTION SHALL NOT IN ANY CIRCUMSTANCE BE CONSTRUED AS AN APPROVAL FOR DEVIATION FROM THE CONTRACT DOCUMENTS UNLESS THE ENTITY SEEKING SUCH APPROVAL HAS, IN WRITING, SPECIFICALLY CALLED THE ENGINEER'S OR THE APPROVING AGENCY'S ATTENTION TO EACH DEVIATION AT THE TIME OF SUBMISSION. SAID ENTITY AND/OR AFFECTED MATERIALS, EQUIPMENT, AND LABOR TO ENSURE PROPER EXECUTION OF THE WORK AS PER THE INTENT OF THE CONTRACT DOCUMENTS.

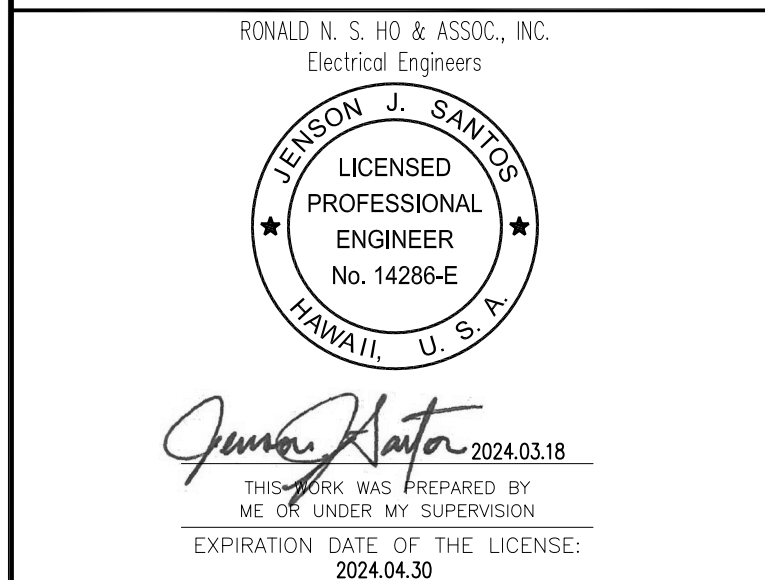
**1 LIGHT FIXTURE SCHEDULE**  
E-5001 NOT TO SCALE



**NOTE(S):**

- NEW TYPE B LIGHT FIXTURE. MOUNT AS HIGH AS APPLICABLE.
- JUNCTION BOX, NEMA 4X, 316SS, 4"SQ X 3 1/8"D.
- 1"GRS CONDUIT TO ADJACENT JUNCTION BOX.
- CONTRACTOR SHALL ENSURE ADJACENT LIGHT FIXTURES ARE SPACED 12' APART.
- COORDINATE WORK WITH OTHER TRADES. SEE SHEET S-5007 FOR RAILING DETAIL.

**2 STEP LIGHT MOUNTING DETAIL**  
E-5001 NOT TO SCALE



DSGN.	DRWN.	CHKD.	APPD.
MP	CAD	JS	JS

**KEY PLAN / NOTES:**

NO.	DATE	REVISIONS
03/18/24	ADDENDUM NO. 2	

**CONSTRUCTION DOCUMENTS**  
JANUARY 19, 2024  
DATE

**PROJECT TITLE :**  
**CONCRETE SPALL REPAIRS AT TERMINAL 2 ROADWAYS**

AT  
DANIEL K. INOUE INTERNATIONAL AIRPORT  
HONOLULU, OAHU, HAWAII

**PROJECT NO.:**  
**AO1043-33**

**SHEET TITLE:**

**LIGHT FIXTURE SCHEDULE AND STEP LIGHT DETAIL**

DATE :	DWG. NO.
01/19/2024	E-5001
SHEET :	
632 OF 634 SHEETS	



**Responses to Request for Information (RFI's/Questions)**  
**HiePRO Questions for Solicitation B24001512**  
**Concrete Spall Repairs at Terminal 2 Roadways**  
**Daniel K. Inouye International Airport**  
**Honolulu, Oahu, Hawaii**  
**State Project No. AO1043-33**  
**AIP Project No. 3-15-0005-XXX**  
**As of March 22, 2024**

- 1. Part 0.C - Wage Rates: Overtime Please confirm that SAT/SUN hours do not need to be paid at OT rates if the union agreements allow ST pay for special shift arrangements.**

Response: Bidders shall abide by the requirements set forth in the following sections of the project specifications:

1. Part 0.C – Wage Rates: “Requirements of Chapter 104, HRS Wages and Hours of Employee on Public Works Law”
2. Part 0.E – Required Federal Airport Improvement Program (AIP) Contract Provisions: “Contract Work Hours and Safety Standards Act Requirements”, “Davis-Bacon Requirements” and “Copeland “Anti-Kickback” Act”
3. Part 0.G – Sample Forms – “Chapter 104, HRS Compliance Certificate

- 2. Section 02222 - Selective Demolition - Part 3.04: Demolition Is there a size or weight limit to gun/equipment to be used for the selective demo/ spall repair demo? Can pneumatic tools be utilized?**

Response: Contractor may use a handheld pneumatic hammer not larger than 30 lbs for spall repair. For full-depth spall repair at connecting link roadways, a medium-duty pneumatics hammer may be utilized. Chipping hammers heavier than a nominal 15-lb class shall not be used for final removal at the boundary of full-depth repairs.  
\*Specification 02222 shall be revised to include this information in Addendum No. 3.

- 3. Section 01300 - Submittals - Part 1.03.A.3 Is there a weight or max load limit for equipment on the concourse, connecting links and roadways?**

Response: This information shall be included in Addendum No. 3.

**4. DWG S-0001: Concrete Repair Section B part 5 Is there an early set time requirement for Concrete and Spall Repair pourback sections?**

Response: Repair phasing and limit shall be approved by DOT-A to minimize disruption to the Airport operation. Reference specification Section 01010 – Description of Work for operational restrictions, as well as other relevant construction documents.

**5. DWG S-0001: Concrete Repair Section B part 5 Is there a time requirement between selective/spall demolition and pouring back? Can we open more areas and pour back all at once?**

Response: The contractor may pour back as soon as the surface preparation is approved.

\*Additional details for this response shall be included in Addendum No. 3.

**6. Section 01533 - Barricades Section 1.03 part B There is are no Traffic control Plan requirements listed on sheet C-1007. Please advise.**

Response: The Plan Sheet is incorrectly referenced and shall be corrected to Sheet No. C-1009.

\*This correction shall be addressed in Addendum No. 3.

**7. Sheet C-1009 From 9PM at the concourse and 10PM at the connecting links please confirm that contractors are allowed to shutdown both directions of traffic until 5AM.**

Response: Reference Section 01010 Description of Work, reissued in Addendum No. 1, and further amended in this Addendum No. 2.

**8. Environmental Controls: Section 3.3 Noise Control Will DOT-A provide a baseline decibel reading from the closest commercial and industrial buildings?**

Response: Reference Addendum No. 1, Section 01560 Environmental Controls specification section has been deleted in its entirety and replaced with Section 01560 General Environmental, Health, & Safety Controls r3/6/24.

**9. SECTION 09911 EXTERIOR PAINTING Structural plans does not specify whether to paint the repaired area or the whole surface structure. Please confirm the intent is to only paint the repaired area to coordinate with the existing paint.**

Response: Only Repaired area will receive paint and the cost for painting is incidental to the repair pay item.

\*Specification 09911 and Proposal Schedule shall be revised in Addendum No. 3 to address this painting issue.

**10. Section 03730 Concrete Repair has multiple pay items for spall repair based on SF as the unit of measure. Please consider changing the pay items to CF or provide a baseline average depth for all Contractors to base bids on.**

Response: Spall Repair pay items will be paid using SF as the unit of measure. Reference construction drawing Sheets S-50XX series for the various types of spall repair details to determine the spall repair depths.

**11. Please provide a pre-bid site visit.**

Response: A pre-bid site visit will not be provided. Please bid according to the solicitation documents.

**12. 03320 - 3.05.F Per spec, Loads exceed 125 psf or 4000 lb concentrated load shall not be used on the connecting link unless approved by DOT-A. The HPC placer/finisher and volumetric mixer trucks will exceed these limits. Please confirm this equipment will be approved by DOT-A.**

Response: Contractor shall follow the load limit requirements.

\*Paragraph 03320 - 3.05.F shall be revised in Addendum No. 3.

**13. 01010 - 1.04 Per section 01010-1.04 "should the state determine that no space is available for [field office/storage space], the responsibility shall then be on the Contractor to find space outside of the airport property." In order to reduce bid pricing, please consider providing an allowance item for office/storage.**

Response: An Allowance will NOT be set up for office/staging.

**14. Please confirm all work associated with hazardous materials will be paid for under bid item 1562.1 and 13282.1**

Response: Allowance Item 01562.1 may be used for work associated with the Management of Contaminated Medias and Allowance Item 13282.1 may be used for work associated with RCRA Hazardous Waste Disposal. Asbestos, lead paint and other hazardous material removal and disposal shall be considered incidental to other Bid Items as noted in Specification Sections 01715, 13281, 13282, 13288 and 13289.

**15. Please consider our substitution request attached**

Response: See the Addendum 2 document which lists the Sheets for the approved substitutions.

**16. Spec section 03730 para 3.06d states ". The Contractor shall supply and place additional reinforcing steel as directed by the Engineer when the existing reinforcing steel has a section loss of 25% or greater. The reinforcing steel shall be of the same type and size as the existing and spliced with a minimum lap length of 30 bar diameters. Exposed reinforcing steel shall be sandblasted clean and maintained to a near-white condition. The Contractor shall roughen all areas of the existing sound concrete substrate to a 6 mm amplitude using methods acceptable to the DOT-A." Please provide an allowance item for the replacement of reinforcing steel.**

Response: The cost for replacement of reinforcing steel is considered incidental to spall repair.

**17. Specifications include section 02513. Please specify where there is AC Pavement on this project.**

Response: Some AC restoration might be required where the new downspout connects to the existing drain line.

\*Additional information regarding asphalt pavement shall be included in Addendum No. 3.

**18. Please provide the minimum strength or time requirement for concrete repair materials prior to opening to traffic.**

Response: Information shall be included in Addendum No. 3.

**19. Please confirm Contractor is allowed to use steel plates to cover open holes and/or protect in place unfinished work prior to opening to traffic.**

Response: Contractor may use steel plates to cover open holes and/or protect in place unfinished work prior to opening to traffic, provided that all safety issues are addressed. The use of steel plates shall be included in the contractor's phasing plans, for review and approval by the DOT-A.

\*Structural notes on sheet S-0001 shall be revised and included in Addendum No. 3.